



Highfield Primary School

WELCOME TO OUR NURSERY YEAR AT HIGHFIELD PRIMARY SCHOOL

June 2024





Highfield Primary School

STAFF AT HIGHFIELD PRIMARY

Headteacher- Mr Wilson



Deputy Headteacher - Mrs Calder



Assistant Headteacher for Early Years -

Ms Halil





Highfield Primary School

The Nursery Team

Class Teacher

Mrs Collins





Highfield Primary School

The Nursery Team

Nursery Teaching Assistant

Miss Odell



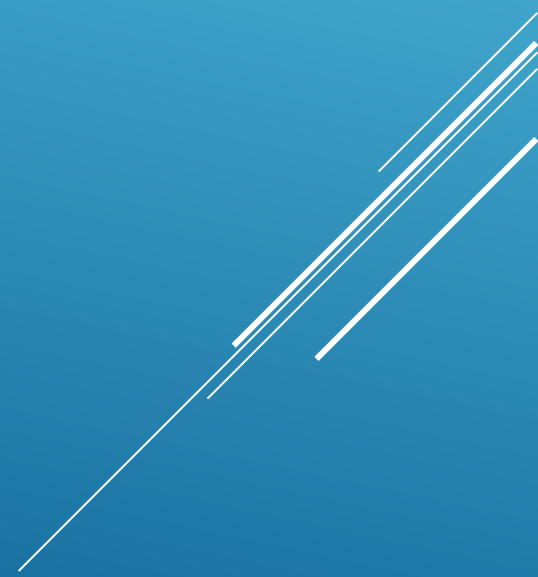


Highfield Primary School

The Nursery Team

Nursery Nurse

Mrs Yianni





Highfield Primary School



**Mrs. Togher- Assistant Head Teacher
SENDCo**



Highfield Primary School

We are a 3 form entry school with a purpose built Nursery, which is part of our Early Years Foundation Stage department. Currently have 2 separate classes AM/PM. We also have our own ARP (Additional Resource Provision)- Berry Class for mainly KS2 children.





WHAT TO EXPECT IN SEPTEMBER



Nursery admission timetable 2024-2025



We know that many of you will need to take time off work or make alternative childcare arrangements, whilst your child settles into school.

We hope this timetable gives you an idea of what we hope our September transition will look like for Nursery children.

A separate letter will be out to explain your child's plan.

	Mon	Tue	Wed	Thurs	Fri
2.9.24	School Inset Day 2 nd September	School Inset Day 3 rd September	Home visits	Home visits	Home visits
9.9.24	Home visits	Home visits	Home visits	Home visits	Home visits
16.9.24	Home visits	Stay and Play Taster session 45 mins	Stay and Play Taster session 45 mins	Children stay on their own 1 hour, 8 <u>chn</u>	Children stay on their own 1 hour, 8 <u>chn</u>
23.9.24	Children stay on their own 1.5 hour, 10 <u>chn</u>	Children stay on their own 2 hours, 10 <u>chn</u> 1.5hrs, 10 <u>chn</u>	Children stay on their own 2 hours, 20 <u>chn</u> 1.5hrs, 10 <u>chn</u>	Children stay on their own if ready full session	Children stay on their own if ready full session



Highfield Primary School

WHAT TO EXPECT IN SEPTEMBER

If a child finds it difficult to settle they will continue to attend on a part-time basis, until staff feel they are ready to attend for a longer day. This will be reviewed on a weekly basis.

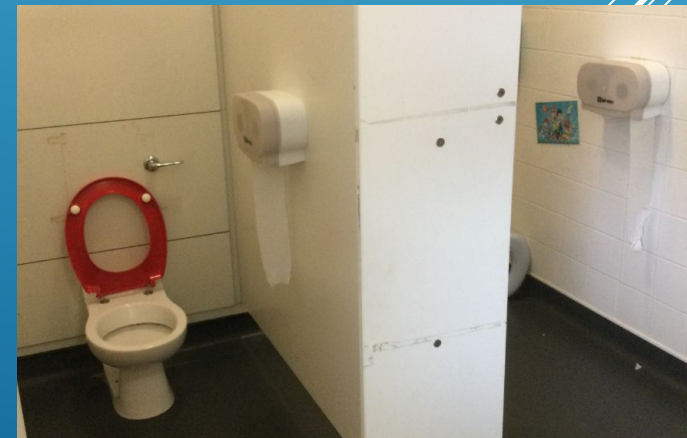


We want the best start possible for each child! Please work with us!



Highfield Primary School

Our amazing Nursery Classroom





Highfield Primary School

Our amazing outdoors



IMPORTANT: Please do not allow your children to use the equipment before or after school.



WHAT YOU NEED TO DO

- Wellington boots and a rain coat can be worn to school (if they come into school with wellies they will need to have shoes to change into).
- Clearly label coats/jackets and shoes please. Children in the nursery do not need to wear school uniform but can if you choose to. Children need to wear comfortable clothing which they can independently remove to access the toilet when needed. Comfortable footwear with no shoe laces.



- A change of clothes clearly labelled in drawstring bag/plastic/cloth bag (spare clothes in school).
- Jewellery- stud earrings only no hoops.



Imagine this!
No Laced
shoes please!





WHAT YOU NEED TO DO/RETURN

- Attendance and punctuality- it is important your child/ren attend daily and are on time. Nursery is the foundations and a very important if not the most important part of schooling. If your child is unwell, you must inform the school immediately. We do not advise that you go on holidays during the school term as this impacts on your child's progress!
- Labelled water bottle - sports cap (not screw topped).



- £10 termly contribution or £5.00 per half term (£30 for the year). This is used for sensory or cooking resources.



Highfield Primary School

HOW YOU CAN HELP YOUR CHILD BECOME 'SCHOOL READY'...

- Encourage independence e.g. following simple instructions and asking for help etc.
- Self-care e.g. getting dressed, going to the toilet/out of nappies (exceptional cases) & regular hand washing etc.
- Share books and storytelling
- Singing nursery rhymes and songs, counting
- Engage with age-appropriate games
- Talk about where they com (my family conversations)
- Make your 'All about Me book' to share in school

Snack Time

We provide the children with a healthy snack- piece of fruit or a vegetable. If you know your child is a bit of a fussy eater then please provide your child with a healthy snack from home to eat at Nursery during Snack time if they choose.

It needs to be a healthy snack- a piece of fruit or vegetable in a small container or resealable snack bag.

No crackers, biscuits, chocolate, sweets or nuts please!



School provides milk for your children to drink at snack time. If your child has an allergy to cow's milk, please inform the nursery staff. You can provide them with alternative options e.g. soya, oat milk.





USEFUL INFORMATION


- If there will be different adults dropping off or collecting your child from school. Please send a photograph of them alongside their name and relationship to your child through using the nursery email address (Do not forget to state which class they are in- either Morning or Afternoon Nursery).
- There is a separate 'Nursery Buzzer' at the main entrance (left hand side) to alert staff if needed.





Highfield Primary School

USEFUL INFORMATION

- You can contact staff through using the Year Group email address or the office email address. We are no longer able to have an in-depth conversation with parents/carers at the beginning or end of the day without prior arrangement.
nursery@highfield-pri.enfield.sch.uk (Nursery class staff)
office@highfield-pri.enfield.sch.uk (Office staff)
- Whatsapp class group chat 
- Please ensure that you check your letter with all information including am/pm class, home visit, taster session and shorter sessions.
- It is important that your child takes part in all aspects of the induction. Any problems please inform me as soon as you have received your email.



THE EARLY YEARS CURRICULUM: THE 3 PRIME AREAS OF THE CURRICULUM

The Foundation Stage is split into 3 prime areas of learning and 4 Specific areas:

Communication and Language

- Listening, Attention & Understanding
- Speaking



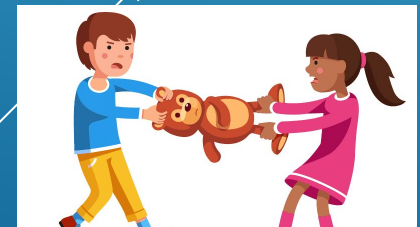
Physical Development

- Gross Motor Skills
- Fine Motor Skills



Personal, Social and Emotional Development

- Self-Regulation
- Managing Self
- Building Relationships





THE 4 SPECIFIC AREAS OF THE CURRICULUM

Literacy

- Comprehension
- Word Reading
- Writing



Mathematics

- Number
- Numerical Patterns



Understanding the World

- Past & Present
- People, Culture & Communities
- The Natural World



Expressive Arts and Design

- Creating with Materials
- Being Imaginative and Expressive

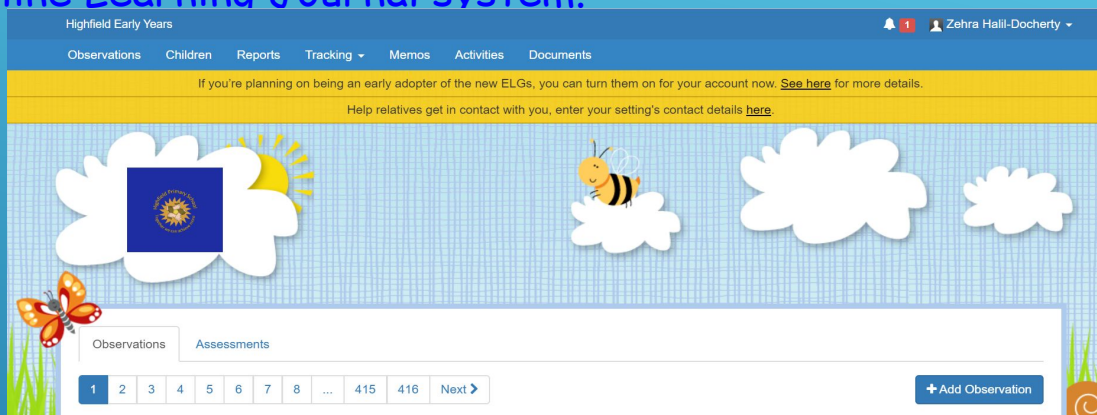




Highfield Primary School



- ▶ We use Tapestry - an online Learning Journal system.



- ▶ Please ensure you read through the Tapestry information.
- ▶ In the Autumn term you will be sent a link to activate your Tapestry account. It is very important that you all do **activate /create your password** to your account as this is where you will access home learning, as you will be expected to share a minimum of 1 home experience per week. You will also access your child's learning journal from any mobile device to comment on the lovely observations. A crib sheet will be shared with you in the Autumn term.
- ▶ Misuse- please do not use this as a platform to contact the staff about things that can be discussed face to face, via email or telephone call e.g. what snack they ate or debate about the observation. All notes like these will be removed. It is your child's learning journal and not to be misused.
- ▶ Expectations from school- 1 to 2 pieces a fortnight as a minimum.



Highfield Primary School

'Together we can achieve more'

A partnership approach

Respect - Cooperation - Kindness

Our Core Values

We look forward to working with you!

Highfield Reception Team

We have a fantastic group of parents that run our (PTA) Friends of Highfield. Please do join!

Friends of Highfield email:

friendsofhighfieldN21@gmail.com

Please join us on Saturday 6th July - School Fete



Highfield Primary School



Friends of Highfield

WhatsApp group



Scan or upload this QR code using the
WhatsApp camera to join this group



Highfield Primary School



*We look forward to
meeting you and
working with your
lovely children!*

